



GRI COMMUNITY

**Take Your Reporting
to the Next Level:**

**Join the GRI
Community**

As a GRI Community member, you can optimize your sustainability reporting practice, showcase your achievements, and contribute to the global development of corporate transparency.

Raise your profile

Showcase your organization's sustainability and transparency with marketing opportunities through the GRI Community Mark.

Learn and improve

Develop your organization's reporting practice through certified professional development, peer-to-peer learning, and benchmarking.

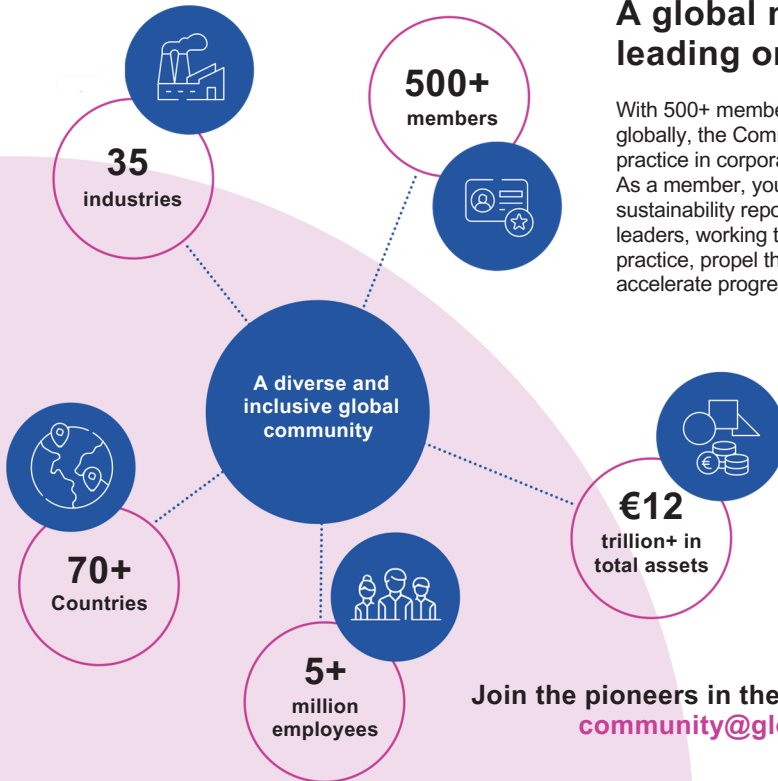
Collaborate and contribute

Strengthen your position and make your mark on the future of impact reporting as part of a global network of leaders.

Is your organization committed to driving improvements in reporting and corporate transparency? Whatever your organization's size, sector, or level of reporting experience, you can join the GRI Community.

A global network for leading organizations

With 500+ members across 35 industries globally, the Community drives best practice in corporate transparency. As a member, you will join a group of sustainability reporting pioneers and leaders, working to improve their own practice, propel their business and accelerate progress in the field.



Join the pioneers in the GRI Community:
community@globalreporting.org



Raise your profile

As a GRI Community member, you highlight your organization's leading position in transparency and profile your sustainability reporting efforts.

- Use the GRI Community Mark on your sustainability report, website, marketing materials and more
- Place your organization among the world's sustainability pioneers
- Showcase your sustainability reporting internally and gain recognition and buy-in
- Profile your knowledge and skills as a certified sustainability professional



Learn and improve

With professional development courses, peer-to-peer learning opportunities and unlimited access to our archive of recorded trainings, you can enhance your skills and optimize your reporting.

- Take advantage of free places on the GRI Professional Certification Program in your first year, and a permanent 25% discount on the GRI Academy
- Gain actionable insights at GRI's events, learn from other GRI Community members, and benchmark your performance to set targets
- Get a direct line to GRI with opportunities to speak to the experts about the Standards, the international reporting landscape, and more
- Improve your reporting with discounted access to GRI's Report Services



Collaborate and contribute

Stand alongside leaders and pioneers in sustainability reporting, grow your global network, and directly influence the future of impact reporting.

- Take a seat at the table with access to GRI-run events, including five virtual events a year
- Forge new connections in your region, with access to regional events
- Be first in line for events and other opportunities, with advance notice in the members-only newsletter
- Directly support GRI's mission and work to develop and update the GRI Standards

"During our 15 years of membership, the program has allowed us to establish relationships with other stakeholders, share learnings and build networks that today are essential to the new social and economic context in which we navigate."

Patricia Perez,
CSR Manager, Abertis

Raise your profile, improve your reporting and drive transparency:
community@globalreporting.org

GRI Community packages for reporting organizations

	ANNUAL TURNOVER <€100 M	ANNUAL TURNOVER €100 M-1 B	ANNUAL TURNOVER >€1 B
Raise your profile			
GRI Community Member Mark	●	●	●
Member details on GRI Website	●	●	●
Learn and improve			
GRI ESRS or Professional Certification Program*	1 free place	3 free places	5 free places
25% Discount on GRI Academy	●	●	●
Discount on GRI Report Services	10%	10%	25%
Direct access to GRI to ask questions and gain in-depth knowledge of the GRI Standards	✖	1 ticket to discuss the GRI Standards	2 tickets to discuss the GRI Standards
High-Level Annual Briefings	✖	✖	●
Learn on-the-go: GRI Newsletter with members-only content and unlimited access to our library of recorded webinars	●	●	●
Collaborate and contribute			
A seat at the table, including 8 GRI-run virtual events in 2025	4 people	4 people	Unlimited
Regional meeting for reporting organizations (may be virtual or in-person)	●	●	●
Membership fee**	€1,250	€5,500	€14,000
Choose from these optional add-ons			
3 Tickets to schedule call with GRI to discuss questions on GRI Standards		€240	
Policy briefing (tailored briefing for your team)		€5,000	
Technical briefing (tailored briefing for your team)		€5,000	

Are you ready to join us and lead the way in sustainability reporting?
Contact the GRI Community team at community@globalreporting.org

* Free places on the GRI ESRS or Professional Certificate Program - Route A - GRI Academy are available only during the first year of membership after 1 September 2023. If all your staff is already certified and for re-certification in the second year of membership, please reach out to community@globalreporting.org.
 ** The GRI Community membership fee is based on the company's gross revenue (in Euros) for the most recently completed fiscal year.